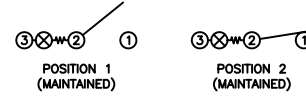


**SCHEMATIC**



**SPECIFICATIONS**

**FUNCTION:**  
1P1T OFF-ON

**RATINGS:**  
ANSI/UL 1054 and CAN/CSA C22.2 No. 55 (E194579):  
15A 125VAC [cURus]  
7.5A 250VAC [cURus]

EN 61058-1:2002+A2 (SE/09138-1):  
16(4)A 250V~ 1E4 T125/55 [ENEC14, SEMKO]  
16(8)A 250V~ 1E4 T125/55 [ENEC14, SEMKO]

**ILLUMINATION VOLTAGE:**  
250V

**CONTACT RESISTANCE:**  
Initial: 35mΩ Max. at 50VAC

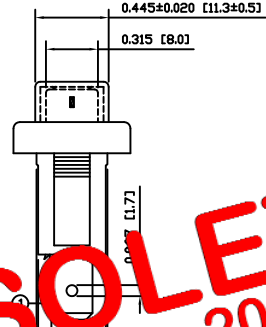
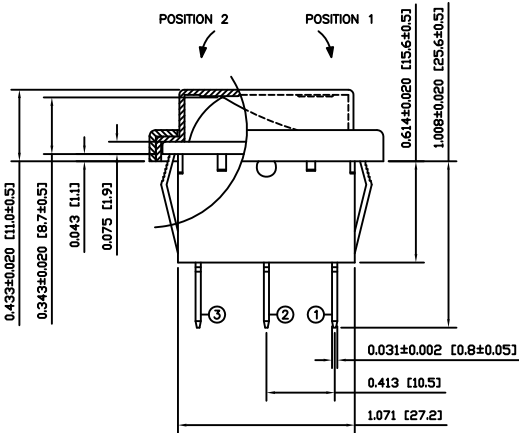
**INSULATION RESISTANCE:**  
100MΩ Min. at 500VDC

**DIELECTRIC STRENGTH:**  
1,500VAC for 1 Minute

**ELECTRICAL LIFE:**  
6,000 Cycles [cURus]  
10,000 Cycles [ENEC14, SEMKO]

**TEMPERATURE:**  
Operating: -20°C to 85°C [cURus]  
Operating: -20°C to 125°C [ENEC14, SEMKO]

**APPROVALS:**



OBSOLETE  
November 2017  
PCR 23092

**COLORS AND MARKINGS**

**BODY:**  
Black

**ACTUATOR:**  
Transparent Red

**MARKINGS:**  
I/O Vertical (1)

**MARKING COLOR:**  
White

**FRAME:**  
Black

**MATERIALS**

**BODY:**  
Polyamide 6/6 (PA66), UL94 V-2

**ACTUATOR:**  
Polycarbonate (PC), UL94 V-2

**LAMP CARRIER:**  
Polyamide 6/6 (PA66), UL94 V-2

**LAMP:**  
Neon Bulb

**LAMP SPRING:**  
Steel

**SPRING:**  
Steel

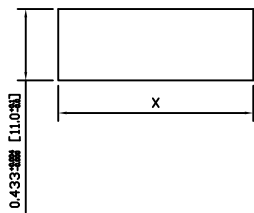
**CONTACTS:**  
Silver Plated Copper

**TERMINALS:**  
Silver Plated Copper  
Brass

**CAP:**  
Polyvinyl Chloride (PVC)

**FRAME:**  
Polyamide 6/6 (PA66), UL94 V-2

**SUGGESTED PANEL CUTOUT**



PANEL THICKNESS	X
0.030~0.049 [0.75~1.25]	1.197 [30.4]
0.049~0.079 [1.25~2.00]	1.210 [30.7]

ACTUATOR	A	09/06/29	CAB
BODY	A	09/06/29	CAB
COLORS	A	10/03/18	CAB
MATERIALS	A	09/07/31	CAB
SPECIFICATIONS	B	11/05/03	CAB
REFERENCE	REV.	DATE	BY

THE INFORMATION CONTAINED IN THIS DOCUMENT IS PROPRIETARY TO E-SWITCH AND IS NOT TO BE COPIED OR TRANSFERRED

B	CHANGED VDE APPROVAL TO SEMKO APPROVAL	19991	11/05/03	CAB
A <td>INITIAL RELEASE</td> <td>19991</td> <td>10/03/18</td> <td>CAB</td>	INITIAL RELEASE	19991	10/03/18	CAB
REV.	DESCRIPTION	PCR	DATE	DRAWN BY

DIMENSIONS	INCHES [MILLIMETERS]
GENERAL TOLERANCES	±0.008 [±0.2] / ±1'
SCALE	DRAWING NOT TO SCALE

**E-SWITCH**

**LAMB INDUSTRIES**

**TITLE**  
RB141C1021-117/ACC-F01-1

ITEM NUMBER	DATE	REVISION
38-RB1S00170	MAY 3, 2011	B